



N&P Engineering Services Ltd

With reference to your enquiry, for which we thank you, we are pleased to submit to you details of the following equipment:

Used/Refurbished OptiFlex

**URSVIKEN HYDRAULIC PRESS BRAKES
100 tonne 3.1 mtr**

***In accordance with the relevant technical specification
enclosed***

Note; The picture includes options

URSVIKEN TECHNOLOGY AB

Mekanvägen 71
SE-932 82 URSVIKEN, Sweden

Tel Nat: 0910 51600
Tel Int: +46 910 51680

E-mail: info@ursviken.com
www.ursviken.com

VAT No. SE 556002261701
Reg No. 556002-2617



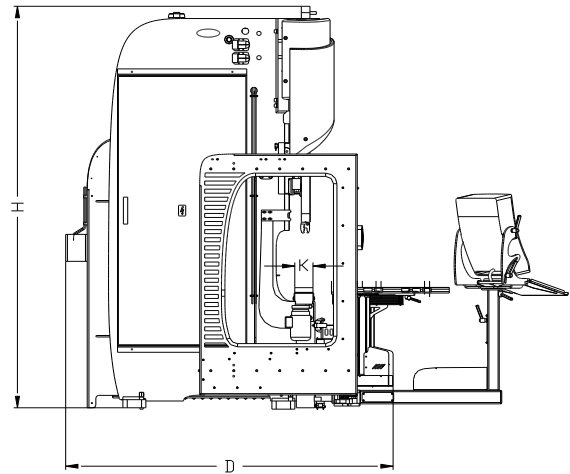
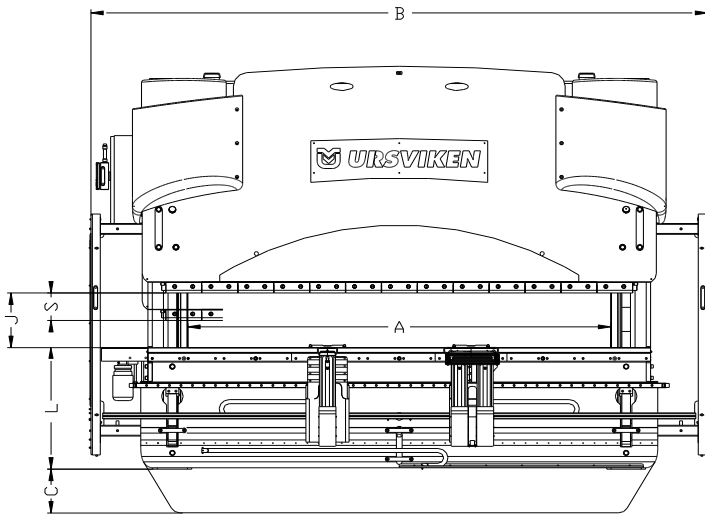
Standard Equipment

- * Electric motor for 400 V, 3-phase, A.C. 50 Hz
- * Control voltage 24 V, D.C.
- * Programmable logic unit (PLC)
- * Linear encoder for exact control of the press beam
- * Suspended arm fixed on the left side of the machine with control system
- * Electro hydraulic remote control operated by foot pedal
- * Mode selector switch built into the CNC (OMI OptiMachineInterface)
- * Operating time counter
- * Hand tools and pressure testing gauge
- * Machine painted in Ursviken colors
- * Instruction manual (English language)
- * Hydraulic oil, fine filtered

Special features

- * Max. noise level at full load 65 dB (A)
- * DBR (Double Bed Reference) system with guaranteed press beam
Repeat accuracy of $\pm 0,01$ mm **Eliminates any need for pressure and or temperature control!**
- * Stepless press depth setting of the loaded press beam
- * "Anti-Whip" programmable, reduced speed of the return stroke for secure plate handling
- * PLC-controlled software, indications in plain language on the DNC display and function diagnostics.

URSVIKEN TECHNOLOGY AB



Technical data

100 ton 3,1 m (3,5 m)

Max. press power	100 metric tons	
Bending length total (A)	3100 mm in between frame. (3500 mm long tool clamping.)	
Max. Width (B)	4310 mm	
Pit depth for table (C)	N/A	
Max. stroke length (S)	400 mm	
Gap inside frames (G)	200	
Max. tool space (J)	550 mm *	
Table height (L)	900 mm	
Table width (K)	100 mm	
Approach speed	170 mm / second	
Pressing speed	1-10 mm / second	<i>With LazerSafe</i>
Return speed	150 mm / second	
Motor	11 kW	<i>Note: Energy save option reduce consumption!</i>
Oil volume	200 litres	
Machine weight	Approx.	13 000 kg

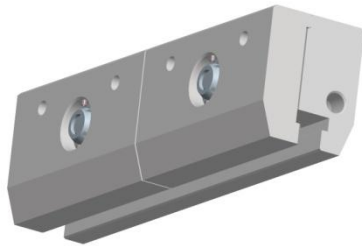
** With integrated crowning measured from die seat to underneath the upper tool clamping = True daylight!*

Programming possibilities of the OptiFlex basic machine:

Press beam Y1 Y2, separate servo-hydraulic axes

- * Direct angle programming or absolute programming
- * Programmable press and return speed (in percentage)
- * Automatic calculation of press power
- * Tilting of the press beam (10 mm/m machine)

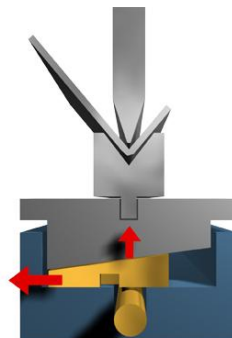
**Hydraulic punch clamping Ursviken Classic:
13 mm T slot fitting for tools with safety tongue**



CNC-crowning 200 mm wide: With integrated manual tool clamping cc 50 mm.

The crowning is a mechanical system with one longitudinal wedge fully integrated in the table. The crowning is CNC-controlled and consists of one true axis (with feedback) that is automatically calculated and set over the control system.

Please see attached document.



Back gauges MG4-1 2 Units

(Gauges 6 controlled axis X1, X2, R1, R2, Z1 and Z2 size 1)

Ursviken have created a back gauge offering maximum accessibility and a large work range combined with a very compact design. The back gauge can be used along the entire length of the press and, thanks to the unlimited gap, right out to the maximum width of the work piece.

This configuration comes with two modules.

The fixed gauge is added to the large gauge stroke, giving the gauge a work field of 1100 mm.

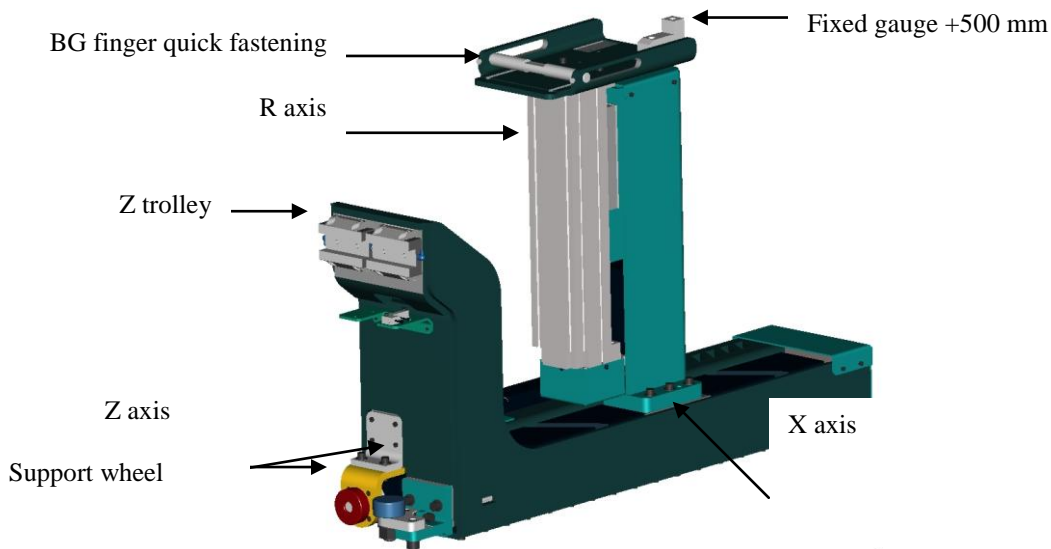


Fig 1

Technical Data:	
High-speed X axis	800 mm/sek
High-speed R axis	300 mm/sek
High-speed Z axis	800 mm/sek
Axis limits	See Fig 2-3
Resolution X (R & Z).....	0,01 mm (0,1 mm)
Repeat accuracy X-axis	± 0,05 mm
Repeat accuracy R-axis	± 0,1 mm
Repeat accuracy Z-axis	± 0,3 mm
Power X axis	570N
Power R axis	1350N
Power Z axis	860N
Max. static load R-axis	3500N

The slim design of the gauges allow you to work with tool stations also very close to the side frames this means that you can take the full advantage of the long bending length in between the side frames.

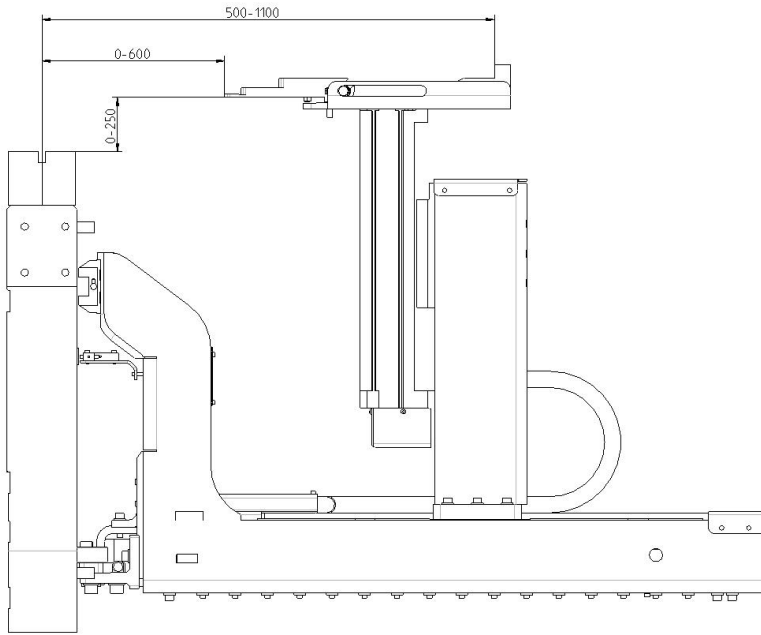


Fig 2

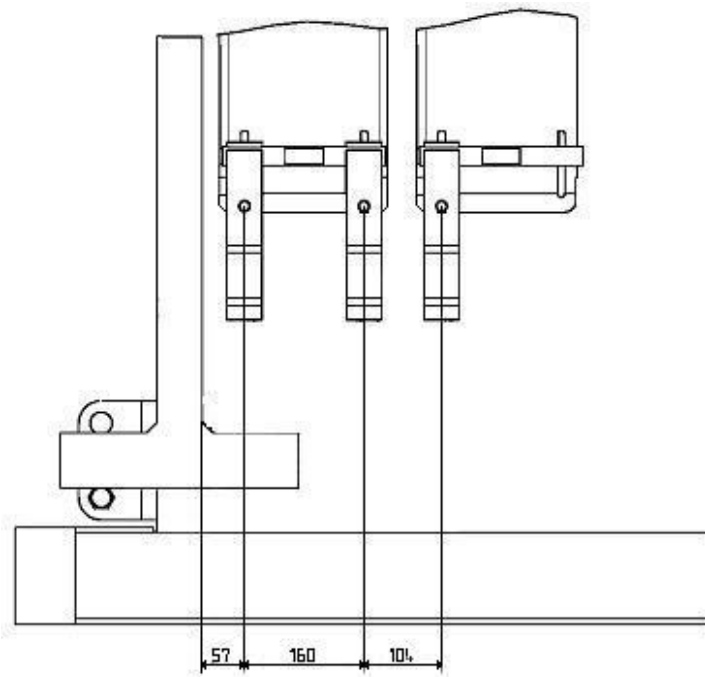
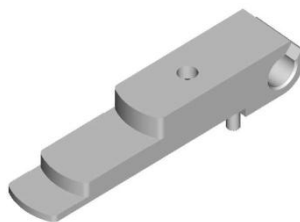


Fig 3

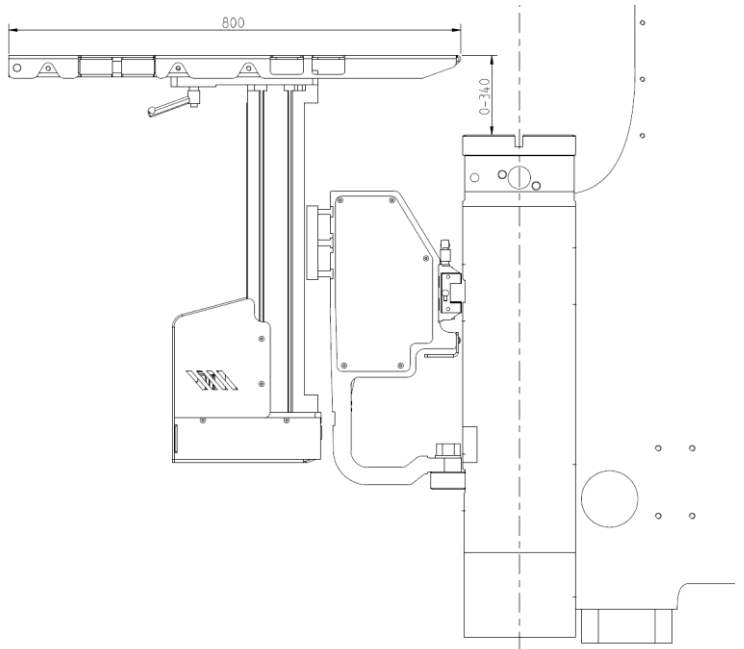
2 Quick exchange Back Stop Fingers radii 48 mm wide steps 0 / 30 / 100 mm

Included



CNC Lift Unit (max 2 per machine)

The lift provides the ability to automatically move the plate support up and down which is a big advantage when producing products with Z form. This plate support is compatible with both light curtain and LazerSafe.



Technical Data:

Stroke H	340 mm
Speed H	280 mm / sek
Max static & centric load	250 kg / lift
Max centric lifting power	120 kg / lift

Options:

Safety equipment LazerSafe: Option

Block laser 05

Please see attached document.

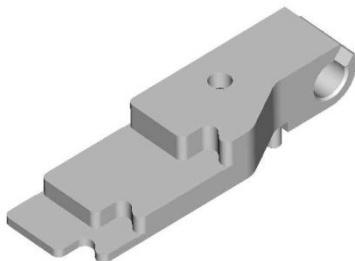
Youtube clip: <http://www.youtube.com/watch?v=r574RV-VE18>



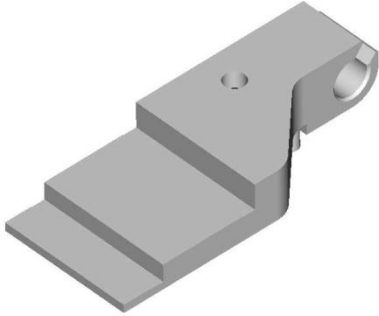
Additional Back stop fingers 2 Units Left and right:

Quick attachment easy to switch from standard to this style with side stops.

The nose is 48 mm wide. The side stops allow you to orientate a corner into the notches.



Additional Back stop fingers 2 Units Left and right:



Manual Table Brackets

Manual brackets that can be lifted or lowered to optional position and then locked with a catch to desired height.

Both units are on a linear rail and can manually be pushed completely outside of the side frames if they should be in the way for extreme Z bendings. Several units can be fitted, also in combination with CNC controlled lifts or lift/swings.

Lift/Swing: (max 2 per machine)

Please see separate document:

Youtube clip: http://www.youtube.com/watch?v=RtGMgihqllw&feature=em-upload_owner